

Barriere per bordo laterale su rilevato

Single sided guardrails



MARCEGAGLIA
BUILDTECH

steel safety on roadways

Require Marcegaglia Buildtech full range of steel road safety barriers: from the **steel partner**, steel safety on roadways.

Marcegaglia Buildtech safety barriers solutions are part of Marcegaglia steel production chain and are engineered, assembled then **tested** in order to comply with specific **norm requirements**.

Certificazioni

Certifications - Zertifizierungen - Certifications - Certificaciones

- **RINA ISO 9001:2008** certificato N. 12370/05/S
- **IQNet - CISQ/RINA** Quality Management System
ISO 9001:2008 Registration N. IT-42009
- **Certificati CE** di costanza della prestazione

Crash tests

Crash tests - Crash-Tests - Essais de chocs - Crash tests



Classe H2 Bordo Laterale - Barriera 3 onde singola su rilevato W3

Class H2 Roadside - 3-waves single sided guardrail W3

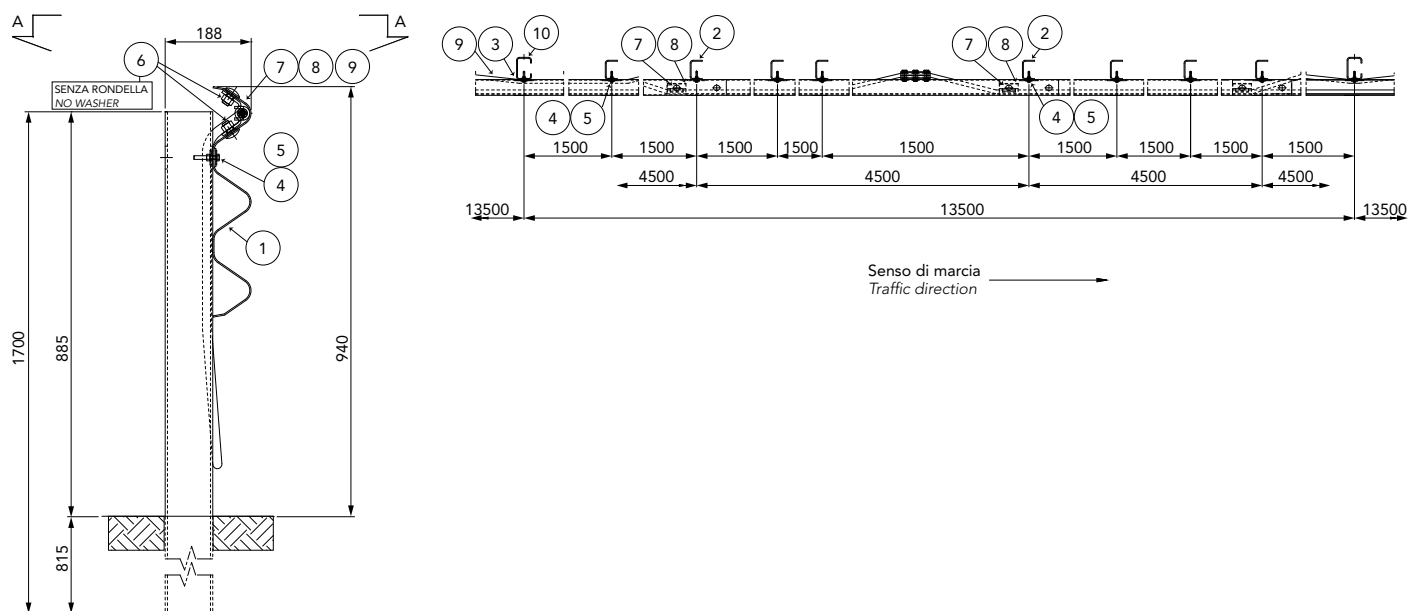
Aufhaltestufe H2 für rammfähige Böden - 3-welliges Rückhaltesystem W3

Classe H2 Bord latéral - Glissière 3 crosses simple sur remblai W3

Clase H2 Borde lateral - Barrera de triple onda simple sobre base terreno W3

H2-W3

3-waves



Giunzione per fune ogni 500 m
Cable connection every 500 m



Caratteristiche Characteristics, Eigenschaften, Caractéristiques, Características

Altezza fuori terra Height above ground level, Höhe über Grundboden, Hauteur hors sol, Altura sobre el suelo	940 ± 30 mm
Profondità d'infissione Depth of penetration, Rammtiefe, Profondeur de piling du poteau, Longitud hincada	815 ± 30 mm
Ingombro trasversale Overall width, Gesamtbreite, Grosseur hors tout, Anchura total	188 mm
Interasse pali Post spacing, Steherabstand, Distance entre poteaux, Distancia entre postes	1500 mm

Rapporti di prova Crash test reports, Testberichte, Comptes rendus d'essais, Relaciones de pruebas

Test n.	Facility	Test	Type	Barrier length m	Mass kg	Speed km/h	ASI max 1.4	THIV max 33 km/h	D m	Vi m	W m
PROVA 792	Aisico	TB51	Laterale 20°	81	13.000	70	-	-	0,9	1,9	1,0=W3
PROVA 787	Aisico	TB11	Laterale 20°	81	900	100	0,9=A	29	0,6	-	0,7=W2

Sales office:

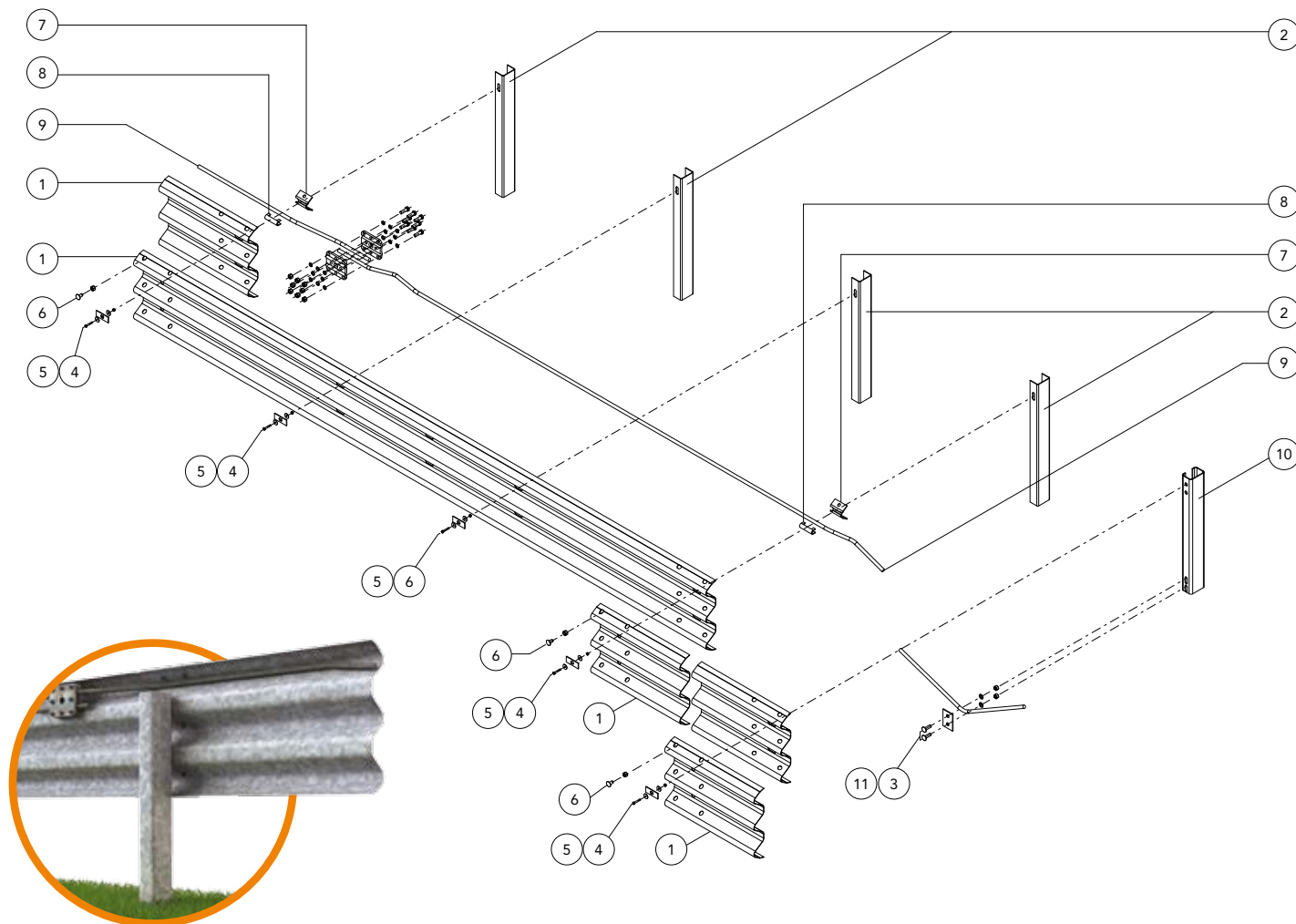
MARCEGAGLIA BUILDTECH guardrail division
strada Roveri, 4
15068 Pozzolo Formigaro, Alessandria - Italy
phone +39 . 0143 77 61 • fax +39 . 0143 77 63 53

guardrail@marcegaglia.com
www.marcegagliabuildtech.it

Plants:

MARCEGAGLIA BUILDTECH Pozzolo Formigaro
strada Roveri, 4
15068 Pozzolo Formigaro, Alessandria - Italy
phone +39 . 0143 77 61 • fax +39 . 0143 77 63 53

studiochiesa • march 2017



Componenti Components, Bauteile, Composants, Elementos

	Descrizione Description		Materiale Material	Codice Code
11	Bullone completo Bolt with nut and washer, Schraube komplett, Boulon complet, Tornillo completo con tuerca y arandela	M16x50 mm	Classe 8.8	63800014
10	Palo "C" C-post, C-Steher, Poteau en C, Poste "C"	120x80x30 Th=5 H=2250 mm	S 235 JR	59400743
9	Fune in acciaio Steel wire rope, Stahldrahtseil, Câble en acier, Cable de acero	Ø 20 mm	Acc. Zinc.	59603479
8	Elemento blocco fune n° 2 Wire rope locking element nr. 2, Seil-Verriegelungselement Nr. 2, Élément de fixation câble n° 2, Elemento de bloqueo cable n° 2		S 275 JR	59602537
7	Elemento blocco fune n° 1 Wire rope locking element nr. 1, Seil-Verriegelungselement Nr. 1, Élément de fixation câble n° 1, Elemento de bloqueo cable n° 1		S 275 JR	59602535
6	Bullone completo Bolt with nut and washer, Schraube komplett,	M16x30 mm	Classe 8.8	63800012
5	Boulon complet, Tornillo completo con tuerca y arandela	M8x50 mm	Classe 8.8	63800497
4	Piastrina copriasola Slot covering plate, Lochabdeckplatte, Plaque de couverture fente, Placa cubre-ranura	100x40x4 mm	S 275 JR	59600127
3	Piastrina Plate, Plättchen, Platine, Platina	120x80x5 mm	S 275 JR	59602473
2	Palo "U" U-post, U-Steher, Poteau en U, Poste "U"	104x65 Th=4 H=1700 mm	S 235 JR	59400670
1	Fascia 3 onde 3-waves beam, 3-wellige Leitschiene, Glissière 3 crosses, Banda triple onda	L=4500/2250/1500 Th=2,5 mm	S 235 JR	59300005



167/2131/CPR/2014