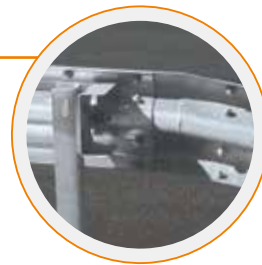


# Accessori - Accessories

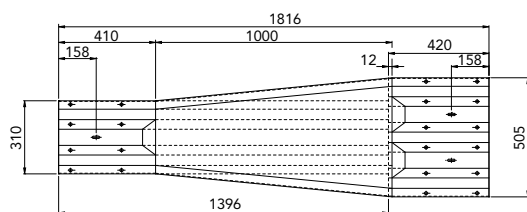
## Raccordi standard

Standard connection - Standard-Verbindungsteile - Raccordement standard - Conexión estandard



### Raccordo dritto 2-3 onde

Straight connection from 2 to 3 wave beams  
Gerader Verbindungsstück 2-wellig / 3-wellig  
Raccordement droit pour glissière métallique de 2 à 3 ondes  
Conexión recta para chapa de 2 a 3 ondas



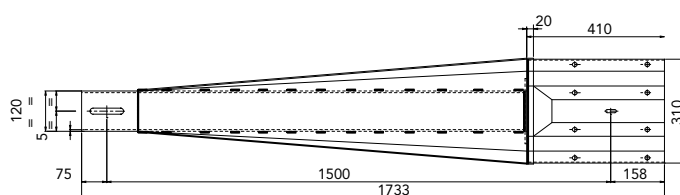
#### material

Galvanized steel - Acciaio zincato

S235JR

### Raccordo 2 onde inf. con trave inf. U

Connection 2-wave beam to U profile  
Gerader Verbindungsstück 2-wellig / U-Rohr  
Raccordement de la glissière 2-ondes à U profile  
Conexión de la barrera bi-onda al perfil U



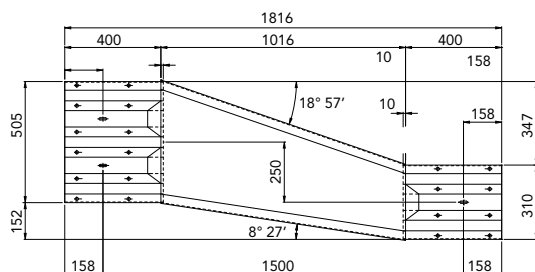
#### material

Galvanized steel - Acciaio zincato

S235JR

### Raccordo inclinato di entrata 2-3 onde

Angled connection from 2 to 3 wave beams - dx  
Schräger Eingangsstück 2-wellig / 3-wellig  
Raccordement incliné pour glissière métallique de 2 à 3 ondes - dx  
Conexión inclinada para chapa de 2 a 3 ondas - dx



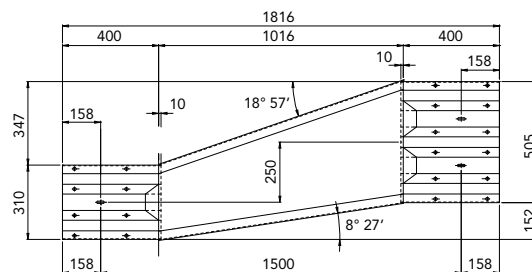
#### material

Galvanized steel - Acciaio zincato

S235JR

### Raccordo inclinato di uscita 2-3 onde

Angled connection from 2 to 3 wave beams - sx  
Schräger Ausgangsstück 3-wellig / 2-wellig  
Raccordement incliné pour glissière métallique de 2 à 3 ondes - sx  
Conexión inclinada para chapa de 2 a 3 ondas - sx



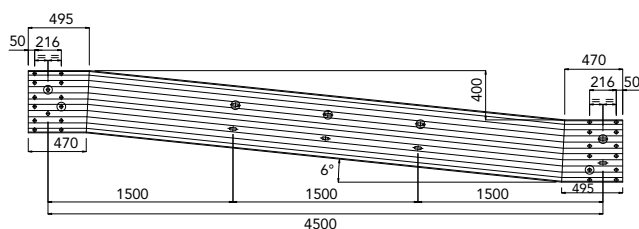
#### material

Galvanized steel - Acciaio zincato

S235JR

### Raccordo inclinato di entrata 3-3 onde

Angled connection for 3-wave beams - dx  
Schräger Eingangsstück 3-wellig/3-wellig  
Raccordement incliné pour glissière métallique 3-ondes - dx  
Conexión inclinada para chapa triple-onda - dx



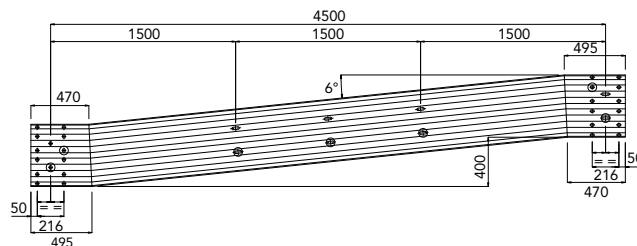
#### material

Galvanized steel - Acciaio zincato

S235JR

### Raccordo inclinato di uscita 3-3 onde

Angled connection for 3-wave beams - sx  
Schräger Ausgangsstück 3-wellig/3-wellig  
Raccordement incliné pour glissière métallique 3-ondes - sx  
Conexión inclinada para chapa triple-onda - sx



#### material

Galvanized steel - Acciaio zincato

S235JR

**Sales office:**

**MARCEGAGLIA BUILDTECH guardrail division**  
strada Roveri, 4  
15068 Pozzolo Formigaro, Alessandria - Italy  
phone +39 . 0143 77 61 • fax +39 . 0143 77 63 53

[guardrail@marcegaglia.com](mailto:guardrail@marcegaglia.com)  
[www.marcegagliabuildtech.it](http://www.marcegagliabuildtech.it)

**Plants:**

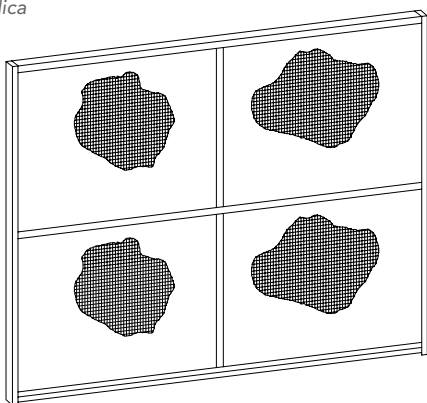
**MARCEGAGLIA BUILDTECH Pozzolo Formigaro**  
strada Roveri, 4  
15068 Pozzolo Formigaro, Alessandria - Italy  
phone +39 . 0143 77 61 • fax +39 . 0143 77 63 53

## Reti di protezione

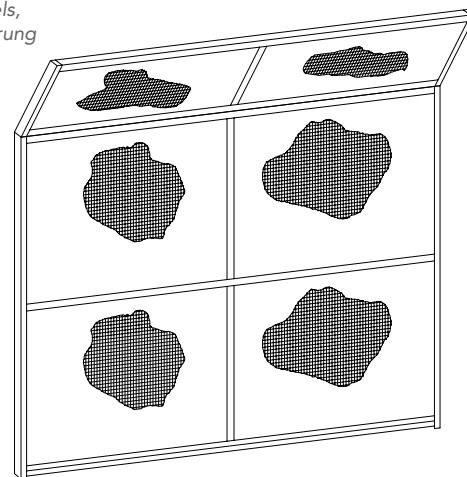
*Protection panels - Schutzwände - Panneaux de protection - Paneles de protección*

**Pannello a rete**

*Mesh panels  
Schutznetz  
Panneaux à mailles  
Paneles en malla metálica*

**Pannello a rete con aggetto**

*Projection mesh panels,  
Schutznetz mit Vorsprung  
Panneaux à mailles  
en saillie  
Paneles en malla  
metálica saliente*

**Pannello a rete e lamiera**

*Mesh panels and plate  
Schutznetz mit unterem Blech  
Panneaux à mailles et tôle  
Paneles en malla y chapa*

